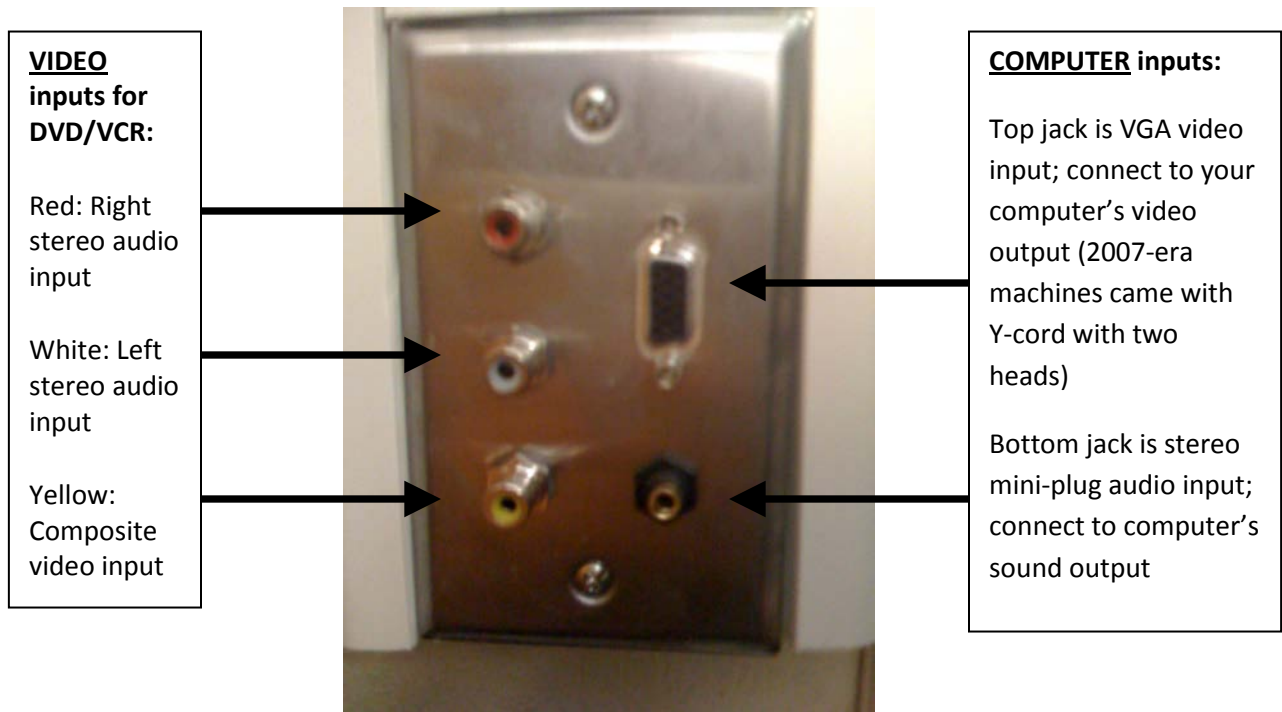


How to hook up your computer to the ceiling-mounted LCD projectors installed in the summer of 2008:

Look around the walls of the room for a new conduit leading down to a wall plate where you can plug into the projector functions. You will find these new ports:



Connect your computer to the VGA and audio mini-plug ports using the new cables that should have been provided. The 2007-vintage computers came with a video Y-cable with two blue-colored outputs. One should be connected via a VGA cable to your computer's monitor and the other by a second VGA cable to the above LCD projector port. **The instructions on the following pages show how to “clone” your computer's display onto the projector.**

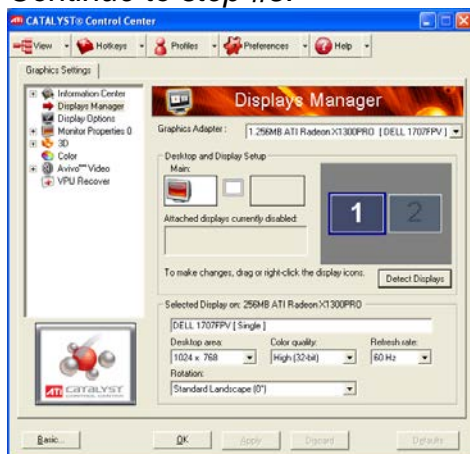
If you have a DVD player, VCR, etc. connect the RCA-style stereo audio and composite video outputs to the VIDEO inputs on the wall plate.

You should have a remote control that will control the LCD projector and the volume of the sound. You can usually just point the remote at the screen to operate it; the infrared light should bounce off the screen to the projector without careful aiming.

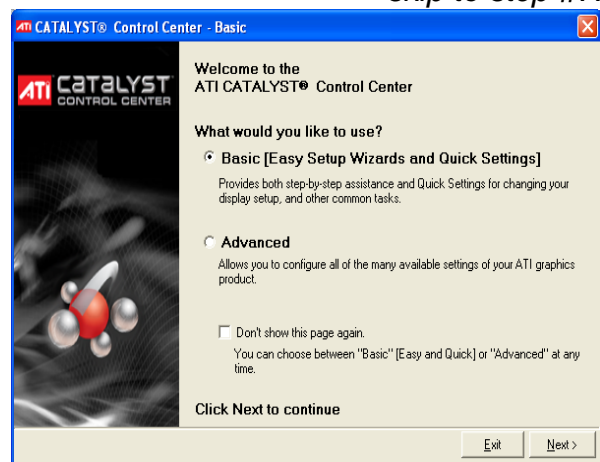
CLONING YOUR DISPLAY TO THE PROJECTOR IN WINDOWS XP

1. Make sure your LCD projector is connected to your computer's video output. Most desktop machines have a Y-cable with one output going to the monitor and the other to a wall port which connects to the projector. Laptops have a VGA port on the back you connect to the projector's wall port and a keyboard command, such as Fn-F8, to toggle the external video port on and off.
2. On the desktop background right-click and then click **Properties**.
3. Click the **Settings** tab & then the **Advanced** button.
4. Click on the **Catalyst Control Center** tab and then click on the **ATI Catalyst Control Center** button. If the screen shown on the left below appears, go to step #5. If the screen shown on the right below appears, skip to step #7.

If you see the screen below,
Continue to step #5.



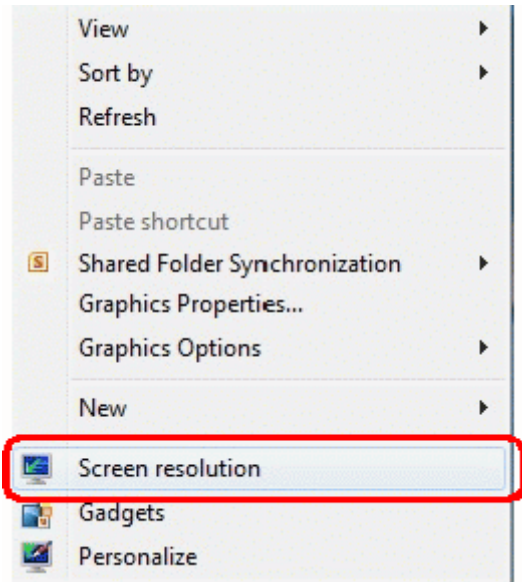
But if instead you see this,
skip to step #7.



5. Click on **#2** monitor and select **Enable**, and answer **Yes**. The screen will go black and then a box asking if you want to keep your settings appears. Click **Yes**.
6. Click the **Basic** button.
7. Make sure the **Basic** choice is selected and click **Next** to continue.
8. The phrase **Setup on my display configuration** should appear. Press the **Go** button
9. The main display should be **Dell**, and the second column should have the **analog monitor** selected. Click **Next**.
10. If you want to set up to do a presentation where the monitor and the LCD projector show the same screen, click on **Clone** and then click **Next**. The screen will go black and then a box asks if you want to keep the settings. Click **Yes**.
11. Click **Exit** and then **Exit** again.

CLONING YOUR DISPLAY TO THE PROJECTOR IN WINDOWS 7

1. Make sure your LCD projector is connected to your computer's video output. Most desktop machines have a Y-cable with one output going to the monitor and the other to a wall port which connects to the projector. Laptops have a VGA port on the back you connect to the projector's wall port and a keyboard command, such as Fn-F8, to toggle the external video port on and off.



2. On the desktop background **right-click** and then click **Screen resolution**.
3. In the new window, look below *Orientation* and, IF you have your projector connected to your computer, you'll see the **Multiple Displays** option. Click and change that to **Duplicate these displays**.
4. Click OK to exit.

